

Fully Automated Coagulation Analysers

# CN-3000/CN-6000



Together for a better  
healthcare journey

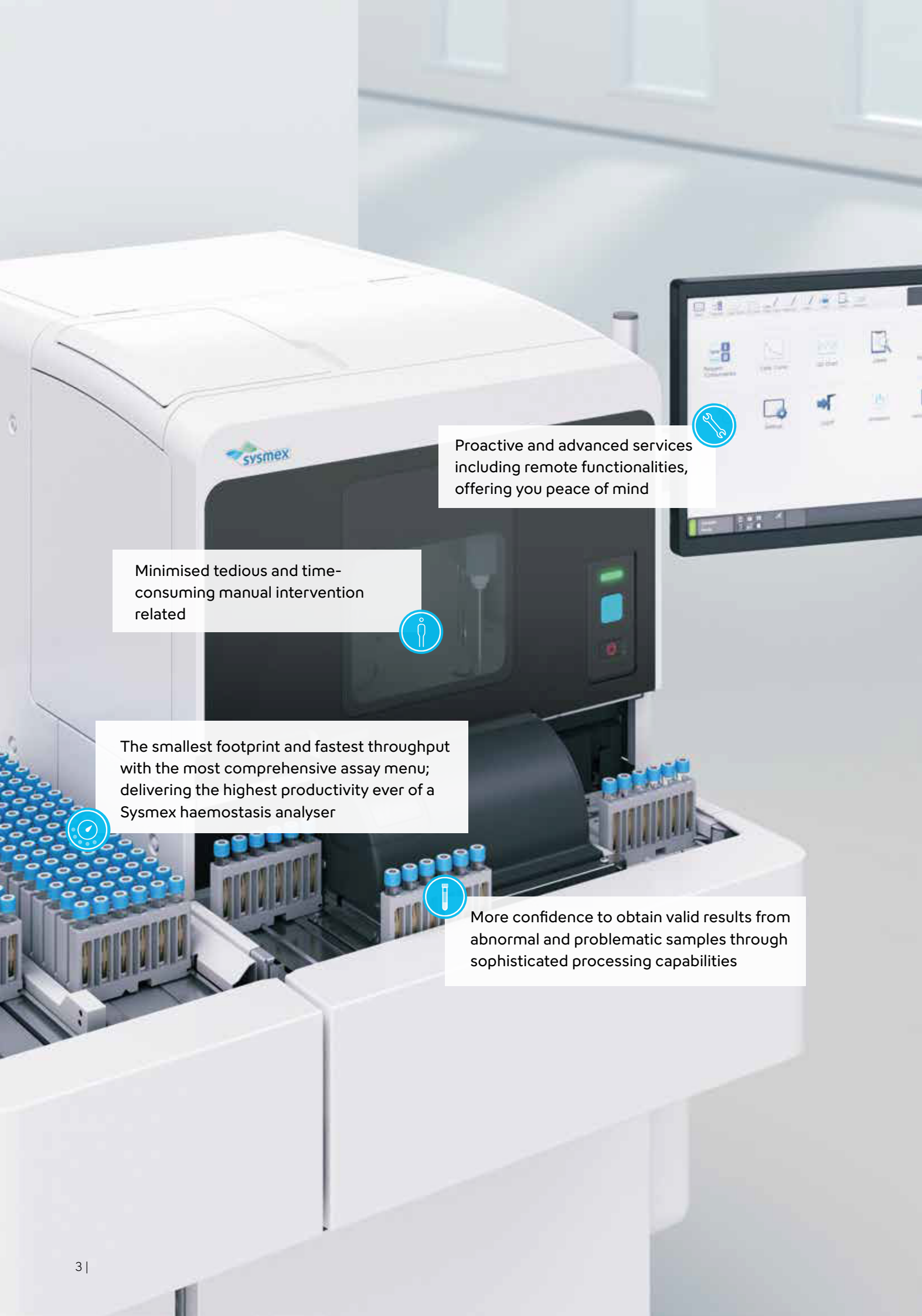
# Wondering how to cope with rising test numbers?

*Benefit from our automated island solution, which is cost-effective, space saving, and adaptable to your haemostasis workflow.*

- Flexibility to connect up to three analysers to a track system handling up to 1,000 tubes/h.
- Enable closed tube side sampling from multiple tube types through the cap piercing functionality

*With decades of experience in haematology and urinalysis workflow automation and thousands of satisfied customers, you can trust in Sysmex automation solutions for the haemostasis work area.*





Proactive and advanced services including remote functionalities, offering you peace of mind

Minimised tedious and time-consuming manual intervention related



The smallest footprint and fastest throughput with the most comprehensive assay menu; delivering the highest productivity ever of a Sysmex haemostasis analyser



More confidence to obtain valid results from abnormal and problematic samples through sophisticated processing capabilities

# Power in a new dimension

*Your investment today holds the power to satisfy tomorrow's needs.*



## Powerful productivity

Less space needed, more possibilities gained: CN-Series' ergonomic design paired with its ultra-high throughput leads to unmatched productivity per square metre, complemented by a wide assay portfolio to give you the utmost room for growth.



## Operational power

Bring ease of use to a new level with CN-Series. The systems actively support the user for a daily routine experience that is as smooth as possible, and minimises the need of hands-on time.



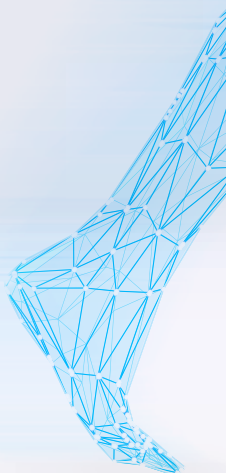
## Analytical power

Make decisions confidently based on your results. Even from difficult samples, CN-Series provides you with reliable results straight away, thanks to its powerful technologies and processing capabilities.



## Powerful services

Choosing Sysmex as a partner in your lab sets new standards for your peace of mind. Maximise your analyser uptime and performance quality with the advanced services Sysmex and CN-Series offer.







## Time is money?

- Shorten your turnaround times with CN's high throughput of up to **450 tests/h.**
- Use one system for routine and specialty assays – CN offers you the opportunity, including e.g. **platelet aggregation** and **DOAC** assays.
- **Save lab space** without compromising on speed. CN does not need to be big to be powerful.
- Get more analyses from less volume: CN requires only a **minimal sample dead volume.**

## Difficult or critical sample?

- Not all samples coming to the lab are perfect. CN identifies sub-optimal samples with its **HIL** and **sample volume checks**.
- With its proven **multi-wavelength technology** for clotting, chromogenic, platelet aggregation and immunoassays, CN analyses samples reliably, even with demanding assay profiles.
- Assess comprehensive coagulation functions through CN's **clot waveform** analysis (CWA).
- CN makes inhibitor testing more convenient, thanks to its on-board **cross-mixing** functions.

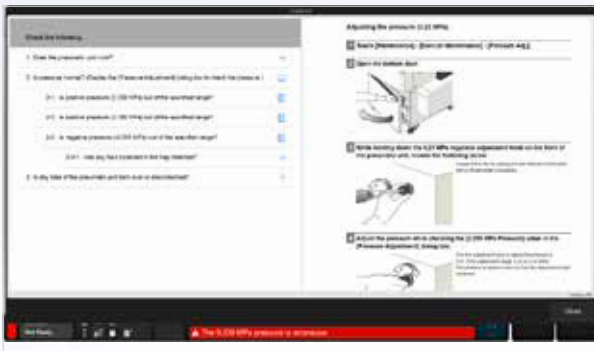


## Another busy working day ahead?



- CN is here to help: the system tells you up front how many vials of which reagent it needs to run the planned daily routine **without interruption**.
- Save yourself time from manual dilutions of **platelet aggregation** agonists with CN's **automatic dilution function**.
- **Connect** your CN directly **to your water purification system** so you do not have to carry rinse water tanks around.
- Run up to **120,000 samples** without changing the **piercer**.
- **LED light sources** ensures **longevity** of **up to five years** and without user maintenance.

## Tired of preventable downtime?



- CN proactively helps **prevent sudden downtime** by technical self-check functions allowing real-time diagnosis.
- Together with Sysmex's **remote support** capabilities, CN downtime can be minimised and made to fit in better with the lab's schedule.
- CN's **interactive guide** leads the operator easily through the required actions and countermeasures in the event that **trouble-shooting** becomes necessary.

*With over 50 years' experience and a global presence in more than 190 countries, Sysmex provides high-quality products, service and support to healthcare professionals in the field of in vitro diagnostics around the world.*



# Key specifications

Models	CN-3000, CN-6000
Principles/technologies	clotting, chromogenic, latex IA, aggregation, CLIA*
Throughput	CN-3000: PT: 225 tests/h; PT/APTT: 215 tests/h CN-6000: PT: 450 tests/h; PT/APTT: 401 tests/h
Analysis methods	dilution measurement, multi-dilution (MDA), cross-mixing, automated measurement (repeat, re-dilution, reflex), clot waveform analysis (CWA)**
Light source	LED (36,000 h) with multi-wavelength capability (340 nm, 405 nm, 575 nm, 660 nm, 800 nm)
Pre-analytical checks	HIL check (assay-based), sample volume check
Loading capacity	30 tubes with standard sampler; continuous loading 120 tubes with sampler module***; continuous loading
STAT position STAT TAT	1 position with cap-piercing (micro mode is not available) PT: 4.5 min
Reagent positions Buffer positions	38 positions 6 positions (room temperature)
Storage temperature	4–12 °C in the reagent cooling unit (ambient temperature 15–28 °C)
Traceability	available vial lot#, cal#, operator ID, QC result, operation log, etc.
QC method QC record	Westgard, Xbar, L-J up to 40 QC files with 1,200 points/file import previous QC data and make QC graph time span, scheduling (e.g. 9:00, 12:00, ...), switch to new vial, test#, specified vial QC (selectable)
Automated QC	
Display monitor	21.5 inch touch screen
LAS connection	available, including CP side sampling
Dimensions/weight	5951 (W) x 906 (D) x 1,350 (H) mm / 230 kg (PU-17 is included, w/o PC/monitor) 1720 mm (W) including cuvette waste box with optional sampler/wagon and cuvette waste box: 1,060 (W) x 1,030 (D) x 1,350 (H) mm
Power supply	main unit: AC 100–240 V / 1080 VA or less pneumatic unit: 100–240 V / 250 VA or less

\* under development | \*\* research use only | \*\*\* optional

**Name of medical device:** Automated Coagulation Analyser CN-Series

**Category:** Automated Blood Coagulation Analyzer CN-3000; Automated Blood Coagulation Analyzer CN-6000

**Product code:** CL971029; CV339763

**Manufacturer:** Sysmex Corporation

**Manufacturing country:** Japan

**Product owner:** Sysmex Corporation

**Address of Product owner:** 1-5-1 Wakino-hama-Kaigandori, Chuo-ku, Kobe, Hyogo 651-0073, Japan

**Registration number:** 15441NK/BYT-TB-CT

**Name of the registration number holder:** Sysmex Vietnam Co., Ltd.

**Address of the registration number holder:** 8<sup>th</sup> Floor, Centre Point Building, 106 Nguyen Van Troi street, Ward 08, Phu Nhuan District, Ho Chi Minh City

**Functions and uses:** The automated coagulation analyzer is used in in-vitro diagnostics to measure the time, concentration and activity of coagulation factors.

## Sysmex Asia Pacific Pte Ltd

Tel +65 6221-3629

[www.sysmex-ap.com](http://www.sysmex-ap.com)

## Sysmex India Pvt. Ltd

Tel: +91 (22) 6112-6666

[www.sysmex.co.in](http://www.sysmex.co.in)

## PT Sysmex Indonesia

Tel +62 (21) 3002-6688

Fax +62 (21) 3002-6699

[www.sysmex.co.id](http://www.sysmex.co.id)

## Sysmex (Malaysia) Sdn Bhd

Tel +60 (3) 5870-5288

[www.sysmex.com.my](http://www.sysmex.com.my)

## Sysmex New Zealand Ltd

Tel +64 (9) 630-3554

[www.sysmex.co.nz](http://www.sysmex.co.nz)

## Sysmex (Thailand) Co., Ltd

Tel +66 (2) 032-2536 Fax +66 (2) 116-5396

[www.sysmex.co.th](http://www.sysmex.co.th)

## Sysmex Philippines Inc.

Tel +63 (2) 621-2460 Fax +63 (2) 621-2432

[www.sysmex.com.ph](http://www.sysmex.com.ph)

## Sysmex Vietnam Co., Ltd

Tel +84 (8) 3997-9400

Fax +84 (8) 3997-9405

[www.sysmex.com.vn](http://www.sysmex.com.vn)

## Sysmex Vietnam Co., Ltd (Hanoi Branch)

Tel +84 (4) 3776-7020 Fax +84 (4) 3776-7022

[www.sysmex.com.vn](http://www.sysmex.com.vn)

## Sysmex Australia Pty Ltd

Tel: +61 (2) 9016-3040

[www.sysmex.com.au](http://www.sysmex.com.au)